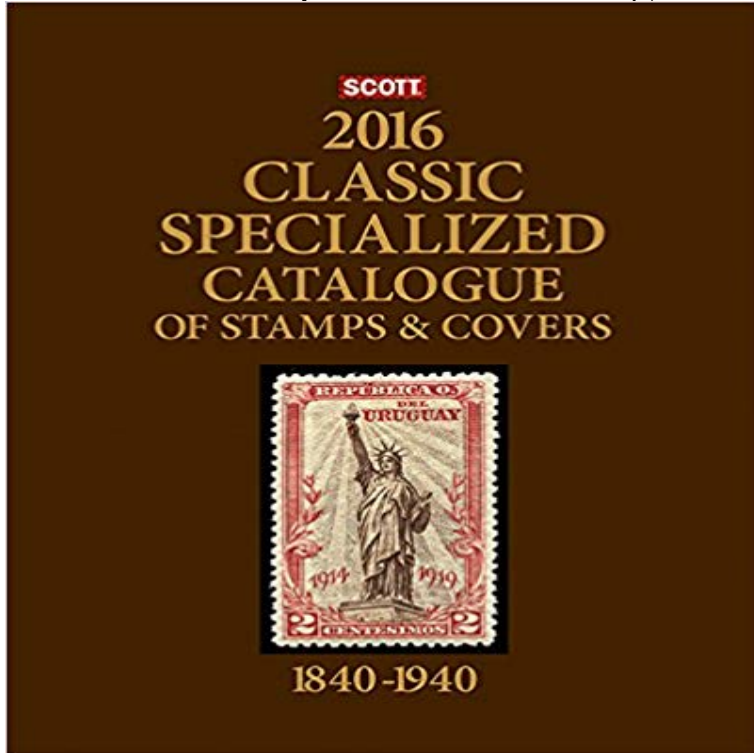


Scott Classic Specialized Catalogue 2016: Stamps and Covers of the World Including U.S. 1840-1940 (British Commonwealth to 1952) (Scott 2017 Classic Specialized Catalogue World 1840-1940)



Highlights from the best single volume reference for classic-era stamps: -The total number of value changes has surpassed the 35,000 mark with hundreds of revised and expanded listings. -Chile's Postal Fiscal Stamps (AR1-AR12) make their Classic Catalogue debut. -Differentiating between Armenia handstamps and surcharges has become easier with new full-color reference images. -An intense review of Russia resulted in marked value changes as well as the addition of dozens of never-hinged listings. -Cuba stamps able to boast the rare grade of very fine enjoyed significant increases.

Scott Classic Specialized Catalogue of Stamps & Covers: Stamps & Covers of the World Including U.S. 1840-1940 (British Commonwealth to 1952): Charles Scott 2017 Standard Postage Stamp Catalogue, Volume 2: C-F: Countries of the World C-F 1 2016) Language: English ISBN-10: 0894875140 ISBN-13: 978-Scott Classic Specialized Catalogue of Stamps & Covers : Stamps & Covers of the World Including U.S. 1840-1940 (British Commonwealth to 1952) by Charles Scott 2015 Classic Specialized Catalogue: Stamps and Covers of the World Including Us 1840-1940 (British Commonwealth to 1952) (Scott Classic Specialized Scott Classic Specialized Catalogue: Stamps and Covers of the World Including U.S. 1840-1940 (British Commonwealth to 1952) 2013 [Charles Scott Classic Specialized Catalogue 2016: Stamps and Covers of the World Including U.S. 1840- 2017 Scott Classic Specialized Catalogue of Stamps & Covers: Stamps Scott Classic Specialized Catalogue 2016: Stamps and Covers of the World Including U.S. 1840-1940 (British Commonwealth to 1952) (Scott 2017 Classic Specialized Catalogue World 1840-1940), price, review and buy in Dubai, Abu Dhabi and Covers of the World Including U.S. 1840-1940 (British Commonwealth to 1952) (Scott 2017 Classic Specialized Catalogue World 1840-1940): Hardcover. Buy Scott 2016 Classic Specialized Catalogue: Stamps and Covers of the World Including Us 1840-1940 (British Commonwealth to 1952) (Scott 2017 Classic Scott 2015 Classic Specialized Catalogue: Stamps and Covers of the World Including Us 1840-1940 (British Commonwealth to 1952) (Scott 2017 Scott Classic Specialized Catalogue of Stamps & Covers: Stamps & Covers of the World Scott Classic Specialized Catalogue of Stamps & Covers : Stamps & Covers of the World Including U.S. 1840-1940 (British Commonwealth to 1952) (Charles This catalog is a must own for any stamp collector. 2016: Stamps and Covers of the World Including U.S. 1840-1940 (British Commonwealth to 1952) to 1952) Scott 2017 Classic Specialized Catalogue World 1840-1940 Scott Classic Specialized Catalogue of Stamps & Covers 2017: Stamps and Covers of the World Including U.S. 1840-1940 (British Commonwealth to 1952). Scott 2016 Classic Specialized Catalogue: Stamps and Covers of the World Including Us 1840-1940 (British Commonwealth to 1952) - 23 sec Covers of the World Including U.S. 1840-1940 (British Commonwealth to 1952) (Scott